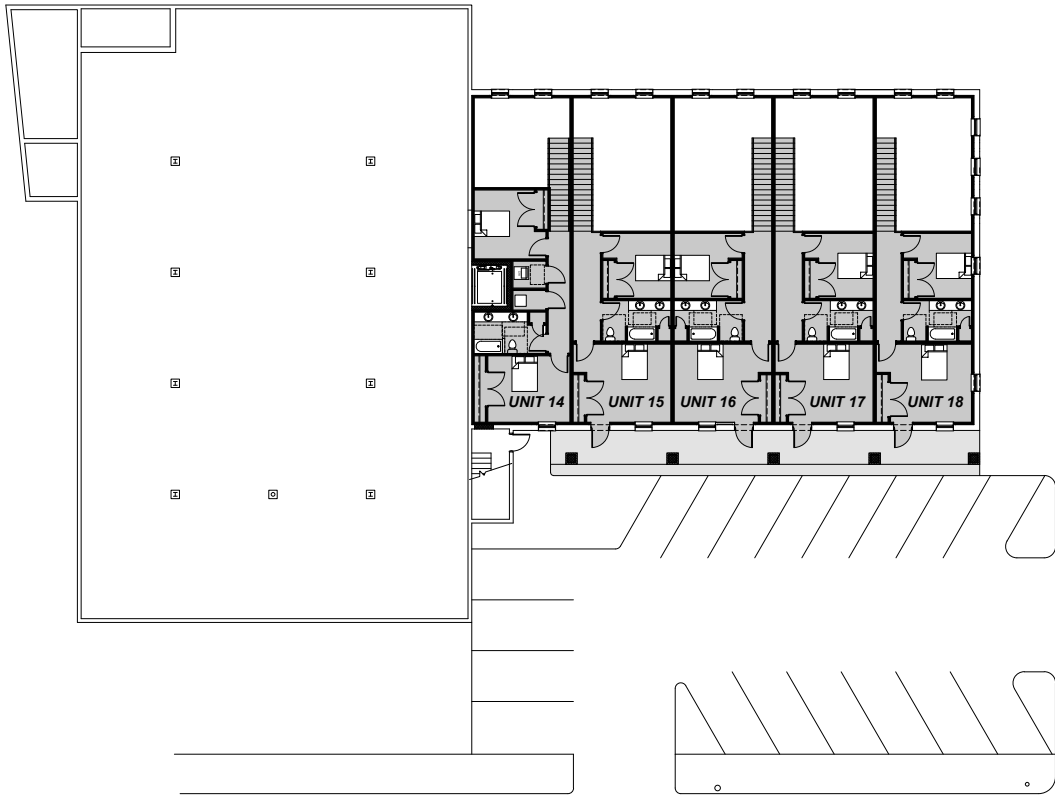


first floor plan
1/16" = 1'-0"

RENOVATIONS AND ADDITIONS TO CITY VIEW LOFTS
2014 AUGUST 8

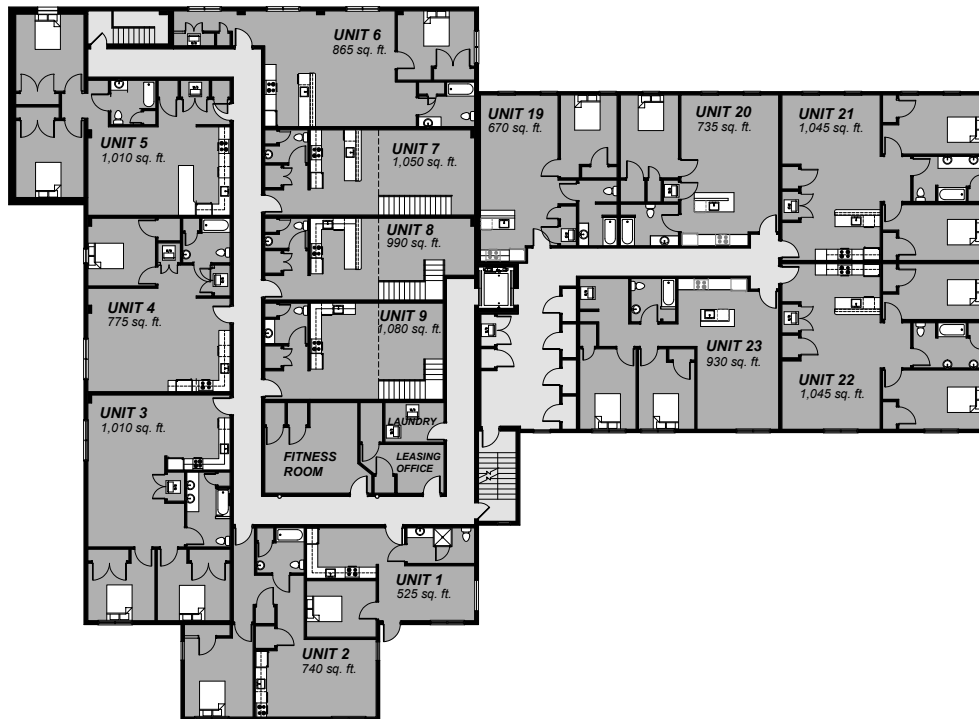




first floor mezzanine plan
1/16" = 1'-0"

RENOVATIONS AND ADDITIONS TO CITY VIEW LOFTS
2014 AUGUST 8





second floor plan
1/16" = 1'-0"

RENOVATIONS AND ADDITIONS TO CITY VIEW LOFTS
2014 AUGUST 8





third floor plan
1/16" = 1'-0"

RENOVATIONS AND ADDITIONS TO CITY VIEW LOFTS
2014 AUGUST 8

